



OCEAN BEACH POLICY AND PROJECTS

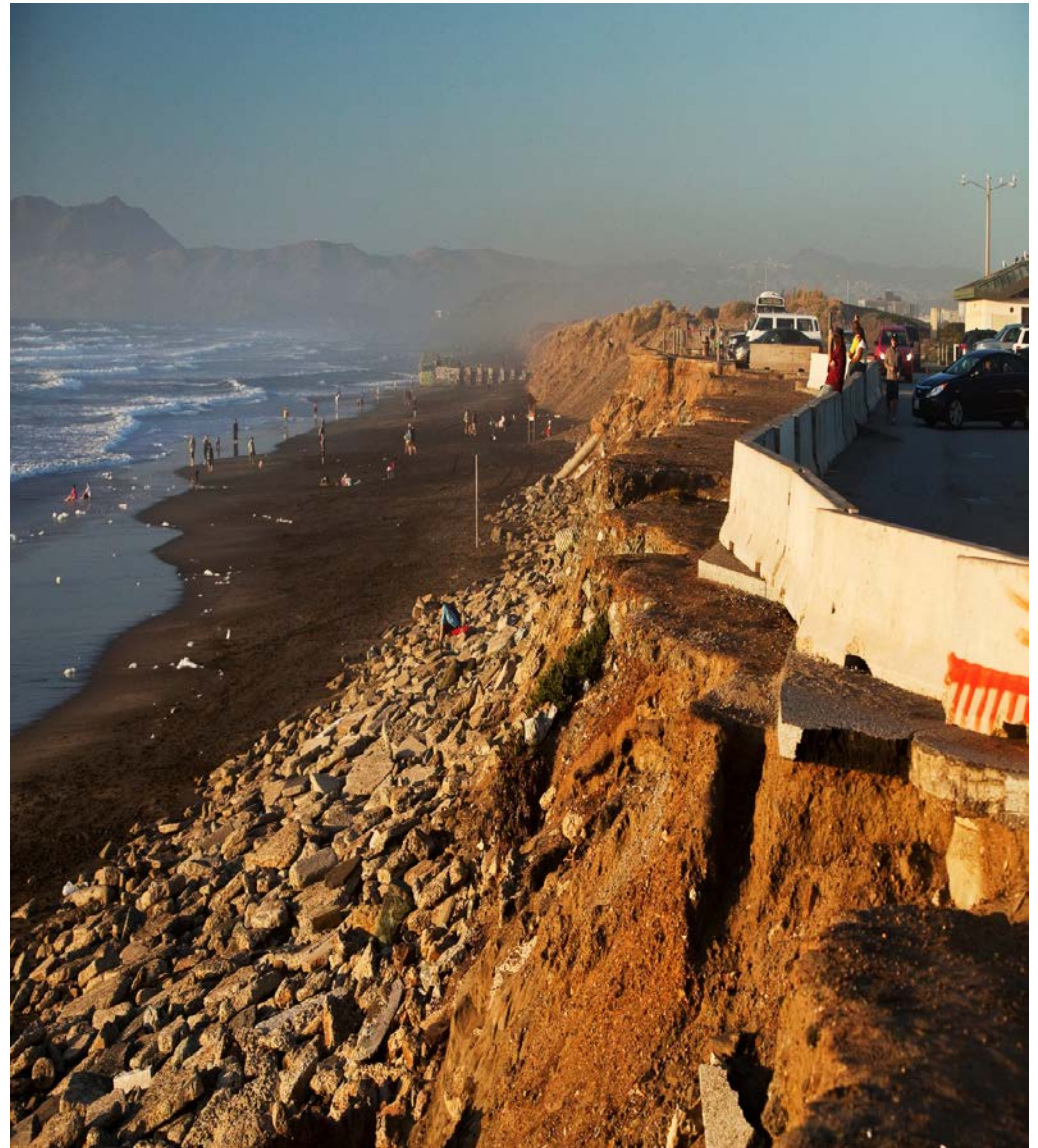
Maggie Wenger
1.22.18/Capital Planning Committee



San Francisco
Planning

South Ocean Beach Erosion

- Winter 2010 storm caused 40 feet of bluff erosion and closed the Great Highway for 10 months
- Short-term Management Strategies; sand placement and use of sand bags, permitted through 2021
- Parking lot removal as erosion continues



Ocean Beach Master Plan-SPUR 2012

Key Move 1:

Reroute the Great Highway behind the zoo via Sloat and Skyline Boulevards.

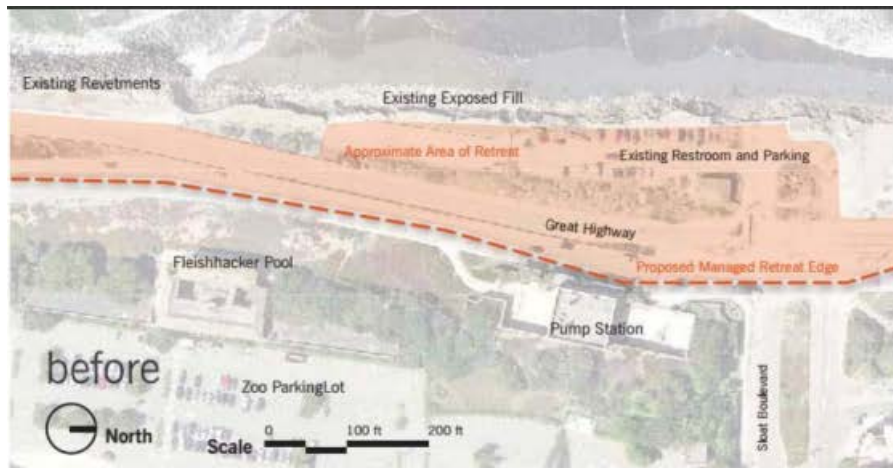


Image Credit: SPUR

Key Move 2:

Introduce a multipurpose coastal protection/restoration/access system.

Local Coastal Program: New Coastal Hazards Section

Objective: Preserve, enhance, and restore the Ocean Beach shoreline while protecting public access, scenic quality, natural resources, critical public infrastructure, and existing development from coastal hazards.

Policy 12.1. Adopt Managed Retreat Adaptation Measures Between Sloat Boulevard and Skyline Drive.

Policy 12.2. Develop and Implement Sea Level Rise Adaptation Plans for the Western Shoreline.

Policy 12.3. Develop and Implement a Beach Nourishment Program to Sustain Ocean Beach.

Policy 12.4. Develop the Shoreline in a Responsible Manner.

Policy 12.5. Limit Shoreline Protective Devices.

Policy 12.6. Requirements for Shoreline Protective Devices.

SFPUC

Phase 1: Short-term Management Strategies: Sand placement and use of sand bags if needed

Estimated Cost: \$1.5 Million/year

Funding Sources: SFPUC, Bond Funds

Construction: 2015-2021 (ongoing)



Image Credit: KALW

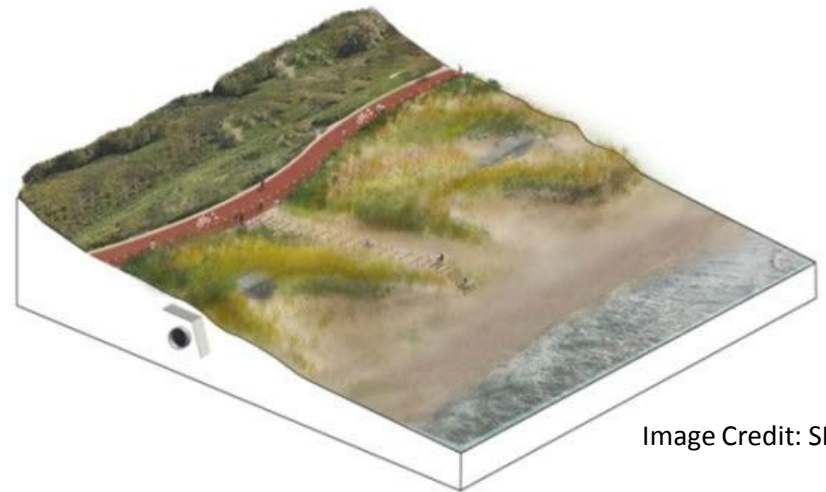


Image Credit: SFPUC

Phase 2: Ocean Beach Long Term Management

Estimated Cost: \$127 Million

Funding Sources: SFPUC, Bond Funds (anticipated)

Construction: 2021-2022

Public Works

Great Highway Road Narrowing

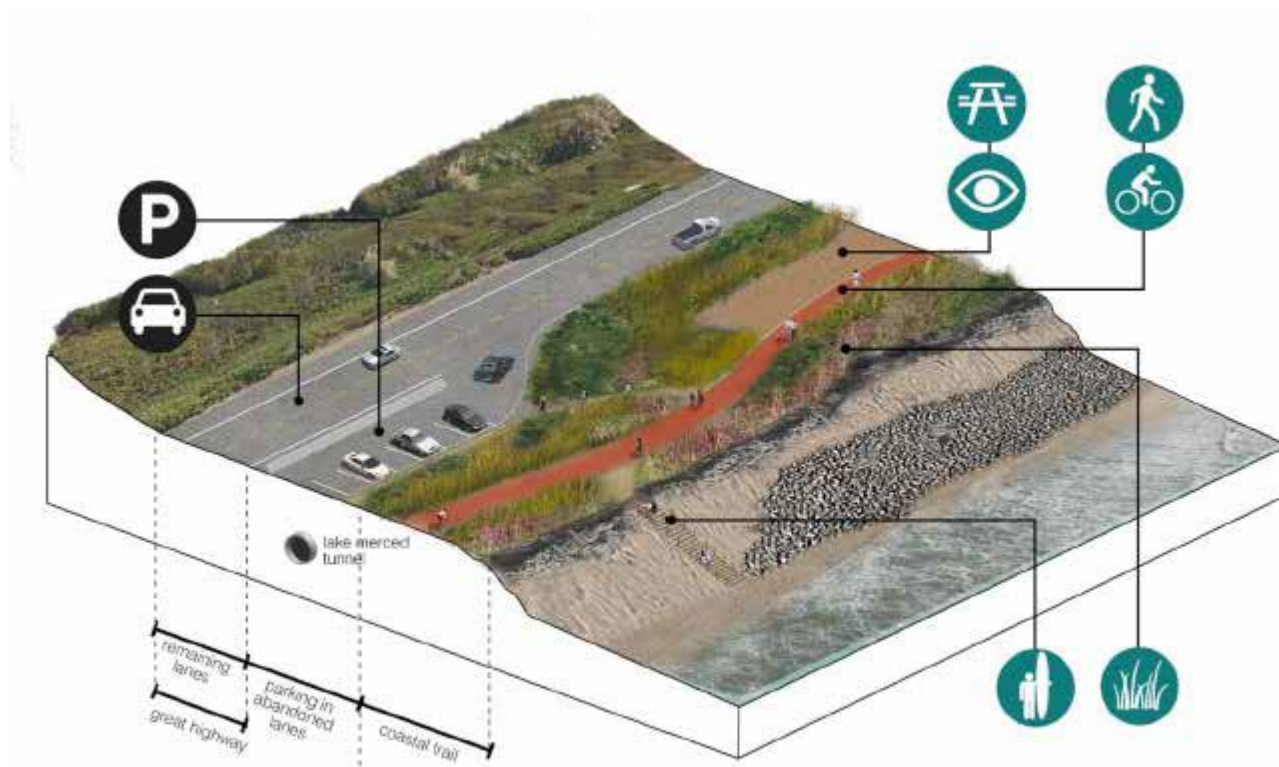


Image Credit: SFPUC

Estimated Cost: \$3.95 Million

Funding Sources: Federal Lands Access Program and Prop K

Construction: Design underway, construction date to follow

Recreation and Parks Department

Connect the Coastal Trail from Ocean Beach to Fort Funston



Image Credit: SPUR

Estimated Cost: \$2 Million

Funding Sources: Federal Lands Access Program, Prop K, SPUR

Construction: Late 2019



THANK YOU



San Francisco
Planning

Maggie Wenger
Citywide Planner
San Francisco Planning
Maggie.Wenger@sfgov.org

www.sfplanning.org