

Item 4. ESER 2010 Final Issuance and ESER 2014 2nd Issuance



Earthquake Safety and Emergency Response (ESER) 2010 and 2014 General Obligation Bond Programs

Presentation to the
Capital Planning
Committee

February 22, 2016

- Request for approval of \$25.3M final issuance for ESER 2010
- Request for approval of \$110.1M second issuance for ESER 2014
- Request for approval of supplementary appropriation of \$4.5M interest earned from ESER 2010

ESER 2010 Bond Program Overview

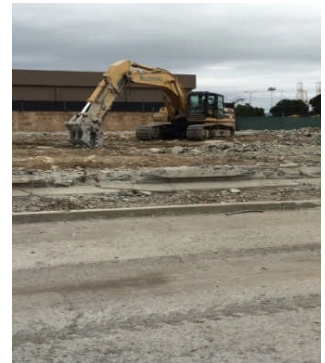
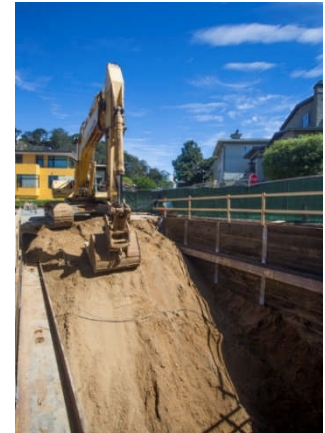
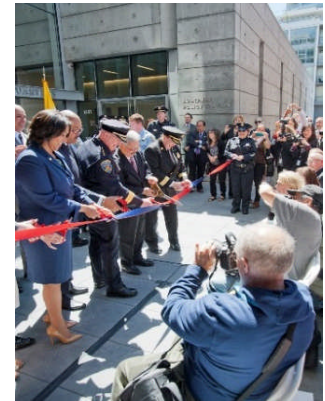
2010 Program	Description	Key Deliverables	Project Selection
Public Safety Building	New SFPD Headquarters, New Police Station (Southern District), New Fire Station (Station 4), and reuse of existing historical Fire Station 30.	Public Safety Building completed April 2015.	N/A
Neighborhood Fire Stations	Renovate or replace selected fire stations to provide improved safety and a healthy work environment for the firefighters.	Varies per Focused Scope, Comprehensive, and Seismic designation.	Department priority for achieving the most effective delivery of services.
Auxiliary Water Supply System	Seismically improve the Auxiliary Water Supply System (AWSS) cisterns, pipelines, tunnels, and physical plant.	Construction of AWSS cisterns, pipelines, tunnel, and building component improvements.	AWSS analysis to identify priority projects to enhance system reliability and responsiveness.

ESER 2014 Bond Program Overview

2014 Program	Description	Key Deliverables	Project Selection
Neighborhood Fire Stations	Renovate or replace selected fire stations to provide improved safety and a healthy work environment for the firefighters.	Varies per Focused, Comprehensive, and Seismic Scope designation	Department priority for achieving the most effective delivery of services
Office of the Chief Medical Examiner (OCME)	Relocate OCME to One Newhall Street in the India Basin Industrial Park.	Construction of the OCME	N/A
Traffic Company & Forensic Services Division	Plan to relocate the SFPD Forensic Services Division (FSD) and SFPD Traffic Company to 1995 Evans Ave.	Programming, planning and design, construction.	N/A
Police Facilities	Focused scope and comprehensive facility upgrade projects at 12 police facilities across the city – 9 district stations and 3 support facilities.	Varies per Focused, Comprehensive, and Seismic Scope designation	Department priority for achieving the most effective delivery of services
Auxiliary Water Supply System (AWSS)	Seismically improve AWSS cisterns, pipelines, tunnels, and physical plant. Procure and implement Flexible Water Supply System (FWSS) components.	AWSS pipeline construction and reservoir joint sealing. FWSS procurement and implementation.	ESER 2010 AWSS system analysis and ESER 2014 supplemental analysis.

ESER Expenditures to Date

Uses	Updated Budget			Expenditures+Encumbrances thru 01/31/2016			Balance	%
	ESER 2010	ESER 2014	Total	ESER 2010	ESER 2014	Total		
Public Safety Building	235.0		235.0	232.6		232.6	2.4	98%
Neighborhood Fire Stations			0.0			0.0	0.0	-
Focused Scope	10.6	7.6	18.2	10.7	3.0	13.7	4.5	69%
Additional Focused Scope	2.3	8.9	11.3	0.0	0.0	0.0	11.3	0%
Comprehensive Renovation	7.0	4.1	11.2	6.8	0.0	6.8	4.4	65%
Seismic Upgrades			0.0			0.0	0.0	-
Station 5	18.7		18.7	2.4		2.4	16.3	17%
Station 16	11.5		11.5	2.3		2.3	9.2	26%
Station 35, Pier Strengthening & CEQA	0.7		0.7	0.7		0.7	0.0	7%
Station 35		30.6	30.6		0.0	0.0	30.6	0%
Station 35 Pier 26		2.0	2.0		0.0	0.0	2.0	0%
Station 48 Treasure Island		1.5	1.5		1.4	1.4	0.1	92%
Other Seismic Work	0.2	6.9	7.1	0.0	0.0	0.0	7.1	0%
EMS HQ Planning		0.6	0.6	0.0	0.5	0.6	(0.0)	101%
Project Controls	11.3	9.9	21.2	9.2	1.2	10.4	10.8	49%
Reserve	3.9	9.1	13.1	0.0	0.0	0.0	13.1	0%
Neighborhood Fire Stations Total	66.3	81.2	147.6	32.1	6.1	38.2	109.4	26%
Office of the Chief Medical Examiner		66.2	66.2		28.8	28.8	37.4	45%
Traffic Company & Forensic Services Division		162.2	162.2		21.5	21.5	140.7	13%
Police Facilities			0.0			0.0	0.0	-
Focused Scope		6.4	6.4		1.1	1.1	5.3	17%
Comprehensive		9.1	9.1		0.0	0.0	9.1	0%
Project Controls		9.5	9.5		0.7	0.7	8.8	7%
Reserve		4.5	4.5		0.0	0.0	4.5	0%
Police Facilities Total	0.0	29.5	29.5	0.0	1.8	1.8	27.7	6%
Auxiliary Water Supply System	102.4	54.1	156.5	69.5	3.1	72.6	83.9	46%
Oversight, Accountability, Issuance Costs	4.3	6.8	11.1	3.4	1.1	4.5	6.7	33%
Controller's Reserve (Ordinance 60-15)	4.2		4.2			0.0	4.2	0%
Total (Millions)	412.3	400.0	812.3	337.7	62.4	400.1	412.2	49%



ESER 2010 Bond Issuance Summary

- Five prior bond sales to date
- Now requesting final issuance: Series 2016C (ESER 2010) \$25.215M
- Appropriating \$4.5M in interest-earned and placing in on Controller's Reserve

<u>Uses</u>	ESER 2010				<u>Total</u>	<u>Reallocate</u>	<u>Revised</u>
	<u>Updated Budget</u>	<u>Prior</u>	<u>Current</u>	<u>Interest Earned</u>			
Public Safety Building (PSB)	235.0	236.7			236.7	-1.7 (A)	235.0
Neighborhood Fire Stations (NFS)	66.3	42.1	21.9	4.5	68.5	2.3 (B)	70.8
Auxiliary Water Supply System	102.4	102.4			102.4	0.0	102.4
Oversight, Accountability, Issuance Costs	4.3	3.6	0.0		4.1	0.0	4.1
Controller's Reserve	6.1	2.3	0.5		5.2	-0.6 (C)	4.6
Total Uses (in millions)	414.2	387.1	25.3	4.5	416.9	0.0	416.9

Notes:

- (A) Moves \$1.7M to Controller's Reserve. The final PSB project costs are less than the current ESER 2010 bond allocation. In 2015, Ordinance 60-15 reallocated \$2.3M in ESER 2010 bond funds from the PSB and placed the funds on Controller's Reserve.
- (B) In addition to \$21.9 from GOB Series 2016C, reallocates \$2.3M of ESER 2010 bond funds from the Controller's Reserve to ESER 2010 NFS.
- (C) De-allocates \$2.3 from Controller's Reserve to ESER 2010 NFS; places the savings from PSB and Cost of Issuance \$1.7M and \$2.5M respectively and places the funds on Controller's Reserve.



ESER 2010 Plan for Final Bond Sale and Interest Earned

Project Name	Amount	Plan for the Funds
Neighborhood Fire Stations	\$21.9M	Construction of Station 5 and Station 16 and for associated soft costs.
Oversight, Accountability, and Issuance Costs	\$0.4M	
Controller's Reserve	\$2.9M	Includes interest earned
Bond Issuance Subtotal	\$25.3M	
Neighborhood Fire Stations	\$4.5M	From interest earned
Total	\$29.8M	

ESER 2014 Bond Issuance Summary

- One prior bond sale to date
- Now requesting Series 2016D (ESER 2014) \$110.1M

<u>Uses</u>	ESER 2014			
	<u>Updated Budget</u>	Bond Sales		<u>Total</u>
		<u>Prior</u>	<u>Current</u>	
Neighborhood Fire Stations (NFS)	81.2	8.2	15.6 ^(A)	23.8
Office of the Chief Medical Examiner (OCME)	66.2	34.3	32.0 ^(B)	66.2
Traffic Company & Forensic Services Division	162.2	30.3	16.4	46.7
Police Facilities	29.5	6.9	10.2	17.1
Auxiliary Water Supply System	54.1	20.0	34.1	54.1
Controller's Reserve			0.0	0.0
Total Uses (in millions)	400.0	100.7	110.1 ^(C)	210.7

Notes:

- (A) Due to the additional allocation of \$2.3M under ESER 2010 NFS, an equivalent amount is de-allocated from ESER 2014 NFS to fund OCME.
- (B) Allocates \$2.3M to OCME project.
- (C) Total uses does not include \$1M Reserve for Market Uncertainty

ESER 2014 Plan for Current Bond Sale

Project Name	Amount	Plan for the Funds
Neighborhood Fire Stations	\$15.6M	Focused Scope projects (see next slide)
OCME	\$32.0M	Completion of construction
Traffic Company & Forensic Services Division	\$16.4M	Completion of design work, bidding and initial construction
Police Facilities	\$10.2M	Focused Scope projects
Auxiliary Water Supply System	\$34.1M	AWSS pipeline construction and FWSS procurement and implementation
Reserve for Market Uncertainty	\$1.8M	
Total	\$110.1	



www.sfdpw.org

