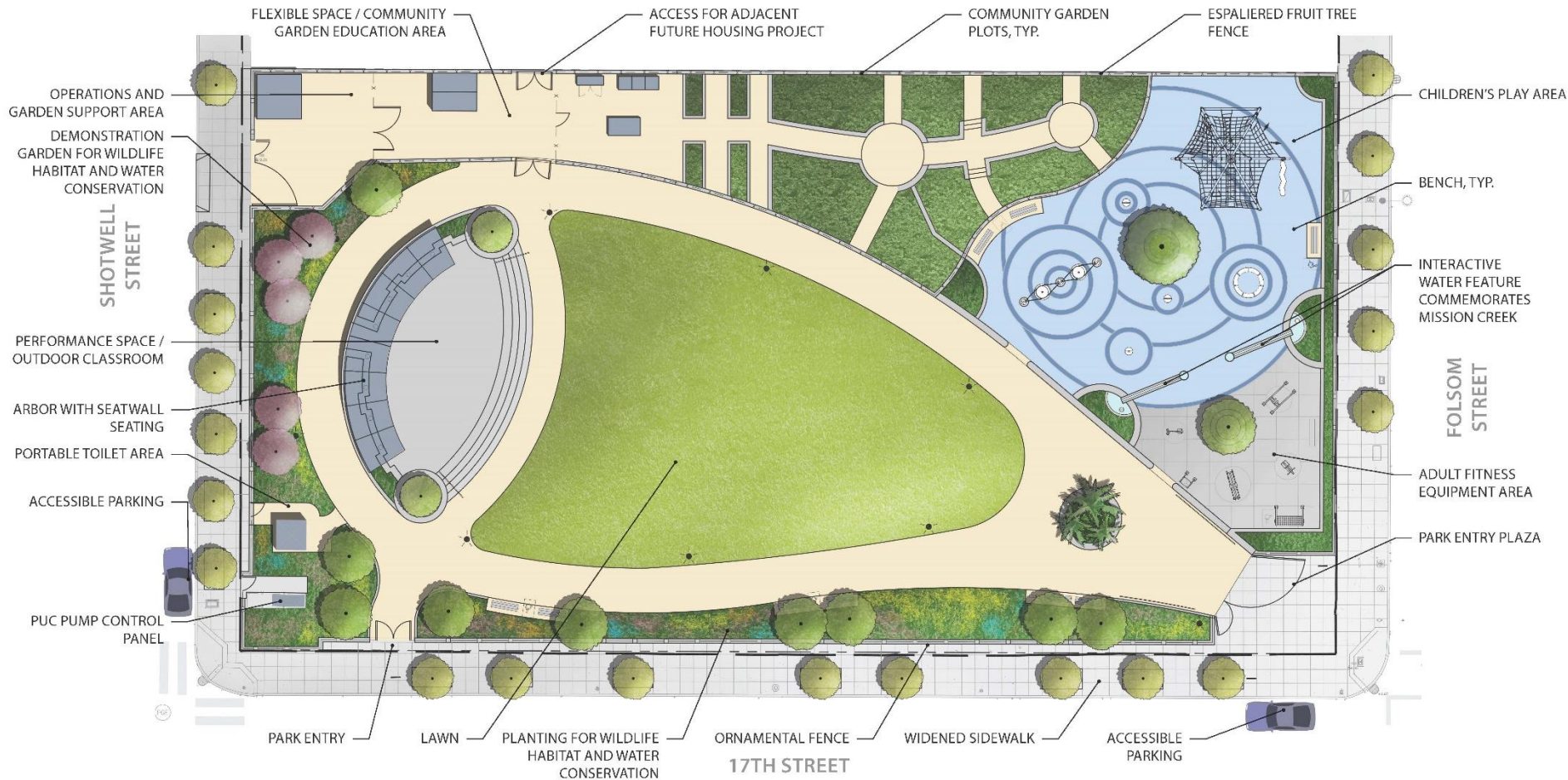




17th & Folsom Park : Supplemental Appropriation

Capital Planning Committee

February 22, 2015



SOURCES AND USES

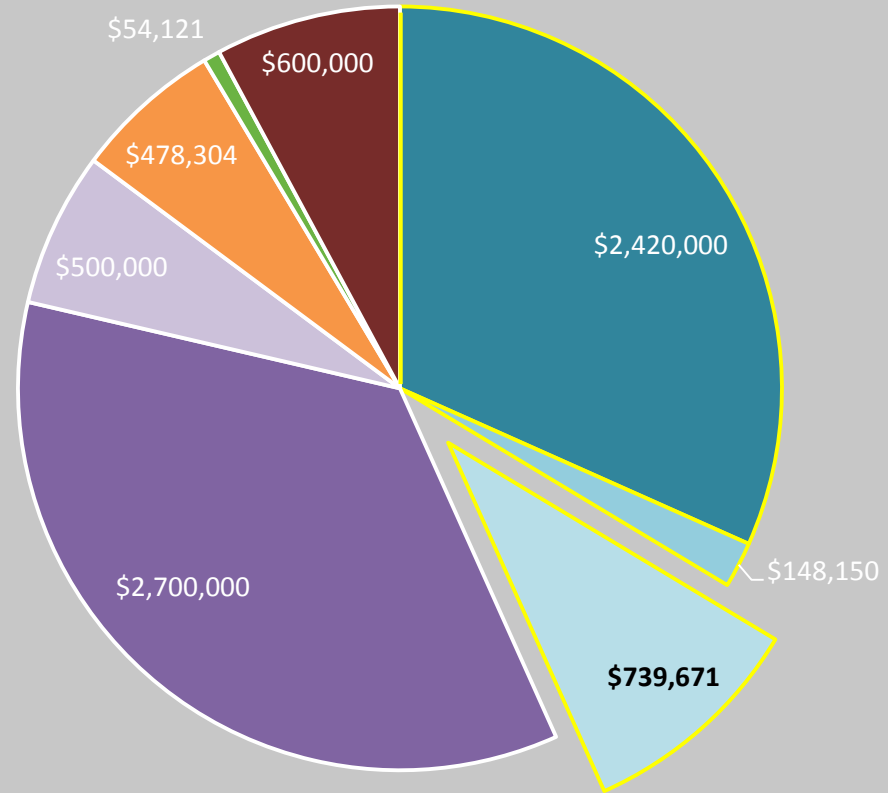
Sources & Uses – Acquisition	
Eastern Neighborhood Impact Fees	\$2,420,000
YTD Expenditures	(\$2,271,850)
Balance	\$148,150

Sources & Uses - Construction	
Sources	4,480,575
YTD Expenditures	(\$932,425)
	\$3,548,150
Award of Construction Contract	(\$3,391,356)
	\$156,794
Construction Alternatives	(\$194,730)
Soft Costs	(\$701,735)
Supplemental Appropriation Request	(\$739,671)



FUNDING SOURCES BREAKDOWN

- EN Impact Fee - Acquisition
- EN Impact Fee - Acquisition Balance
- EN Impact Fee - Supplemental Appropriation Request
- Grant: Prop 84
- Grant: Housing Related Parks
- Lease Revenue Bond
- Open Space Program Funds
- SFPUC - Haz Mat Remediation & Other Costs



**Total for Acquisition and Development
\$7,640,000**



17th & Folsom Supplemental Appropriation

ONESF 10-YEAR CAPITAL PLAN



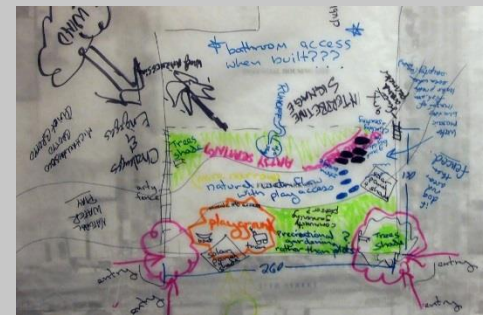
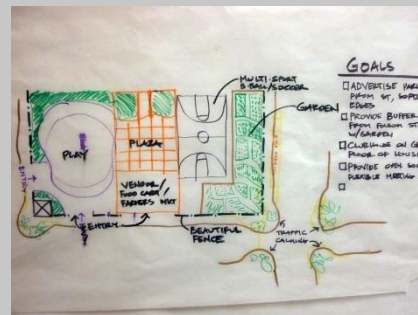
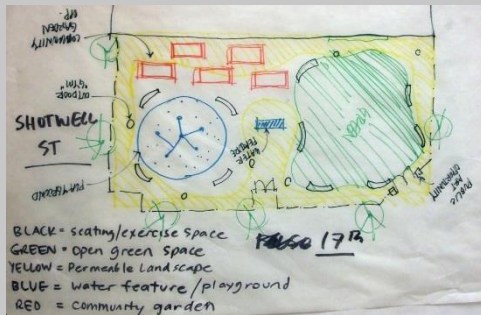
San Francisco
**Water
Power
Sewer**

SFMTA



17th & Folsom Supplemental Appropriation

STRONG COMMUNITY INTERACTION



17th & Folsom Supplemental Appropriation

REMAINING PROJECT SCHEDULE

Project Phase	Date
Bid Opening (Rebid 2)	November 2015
RPD Commission Award Construction Contract Base Bid	December 2015
Construction Contract funds in place to certify contract	February 2016
Execute Construction Bid Alternates deadline	February 2016
Anticipated NTP Construction Base Bid	March 2016
Substantial Completion (300 Calendar days)	November 2016
Final Completion (30 days after substantial completion)	December 2016



17th & Folsom Supplemental Appropriation

RISKS & CHALLENGES

- ✓ **Project Redesign:** Without approving this supplemental funding request, we would not be able to realize the project as designed.
- ✓ **Project Delay:** The project has already been delayed by two years; not adopting this supplemental appropriation would result in additional delays.





Comments and Questions