

FY 2024-25 & FY 2025-26 Capital Budget **GF Dept Requests**



Office of Resilience and Capital Planning | March 18, 2024

CPC AGENDA

General Fund Dept Capital Budget

➤ **Discussion Item:** FY25 & 26 GF Dept Capital Budget Requests

- Public Health
- Homelessness and Supportive Housing
- Public Works
- Recreation and Parks

CAPITAL BUDGET

GF Requests – Public Health (1/4)

Capital Outlook: Address renewal needs across the system while preparing for 2024 Public Health G.O. Bond

\$ in millions, excludes non-General Fund sources

| | FY25 | FY26 |
|------------------|-------------|-------------|
| Total GF Request | 185.3 | 39.3 |

Key Laguna Honda Hospital Projects

\$ in millions, excludes non-General Fund sources

| Project Name | Type | Prior Appropriation | | Requested | |
|---|-------------|---------------------|-------------|-------------|-------------|
| | | FY24 | FY25 | FY25 | FY26 |
| Emergency Power | Enhancement | - | - | 4.5 | - |
| Non-Structural Performance - Emergency Sewage Containment | Enhancement | - | - | 1.0 | 4.6 |
| Kitchen Floor Replacement | Renewal | - | - | 8.5 | - |
| Stationary X-Ray Replacement | Renewal | - | - | 1.5 | - |
| Water Tank Replacement (Ongoing) | Renewal | - | - | 1.5 | - |
| Water Tank Replacement (Future) | Renewal | - | - | 0.7 | 7.0 |

CAPITAL BUDGET

GF Requests – Public Health (2/4)

Key Zuckerberg SF General Hospital Projects

\$ in millions, excludes non-General Fund sources

| Project Name | Type | Prior Appropriation | | Requested | |
|---|-------------|---------------------|------|-----------|------|
| | | FY24 | FY25 | FY25 | FY26 |
| ZSFG Psychiatric Emergency Services Expansion | Enhancement | - | - | 9.0 | - |
| Clinical Lab Automated Track Replacement | Renewal | - | - | 7.0 | - |
| Non-Structural Performance Compliance | Renewal | - | - | 2.5 | - |
| Chiller/Cooling Tower | Renewal | - | - | 10.0 | - |

CAPITAL BUDGET

GF Requests – Public Health (3/4)

**Needs far exceed what can be funded in annual capital budgets.
DPH has prioritized:**

- Projects critical to keeping hospitals in regulatory compliance
- Operationally critical projects that have been started, but now require additional funding to be completed



CAPITAL BUDGET

GF Requests – Public Health (4/4)

Project Urgency

| | |
|--|--|
| Non-Structural Performance Compliance – LHH Sewage Containment | State regulations require that LHH be able to contain sewage for 72 hours in the event of an emergency by 2028. Failure to build this capacity will put hospital in noncompliance |
| Non-Structural Performance Compliance – ZSFG Building 2 | State regulations require the complete bracing of non-structural equipment in Building 2, which houses ZSFG's Central Utility Plant. If this is not completed by 2029, ZSFG will be out of compliance, and if this project is not funded urgently, the permit for this work may lapse, adding years to the project timeline, and jeopardizing the 2029 deadline. |
| LHH Emergency Power | LHH needs a back-up power source in the event of an emergency to restore power for enough time to allow occupants to evacuate safely. This project would extend emergency power to the full campus. |
| LHH Water Tanks | LHH's water is supplied via a redundant system of 2 water tanks which are old and corroding. If 1 tank fails, the hospital would rely on only 1 tank, which increases risk. Unreliability of the water tanks was flagged as a concern during recertification process. |

Questions?



CAPITAL BUDGET

GF Requests – Homelessness & Supportive Housing

Capital Outlook: Strengthening against seismic vulnerability at adult and family shelters.

| | | |
|-----------------------|-------------|-------------|
| <i>\$ in millions</i> | FY25 | FY26 |
| Total GF Funding | 1.2 | - |

Key Projects

| <i>\$ in millions</i> | | Prior Appropriation | | Proposed Budget | |
|---------------------------------|----------|---------------------|-------------|-----------------|-------------|
| Project Name | Type | FY24 | FY25 | FY25 | FY26 |
| 525 5th Street Seismic Planning | Planning | - | - | 1.2 | - |

CAPITAL BUDGET

GF Requests – Homelessness & Supportive Housing

525 5th Street - New Adult Shelter

- HSH requests for \$1.2M in FY25 for pre-bond planning
- 525 5th Street is the largest adult shelter in Northern California and provides approximately 10% of the City's entire shelter bed capacity
- Assumes demolition of the existing shelter, currently rated as an SHR 4
- DPW completed a zoning study in April 2023 and has spent \$42K to date
- Bond budget:
 - Bond allocation: TBD
 - Total project cost: TBD



Questions?



CAPITAL BUDGET

GF Requests – Public Works (1/7)

Capital Outlook: Ongoing capital programs, such as street resurfacing, curb ramps, and right-of-way programs remain a priority. Renewal needs at the Operations Yard are reaching critical levels.

\$ in millions, excludes non-General Fund sources

| | FY25 | FY26 |
|------------------|-------------|-------------|
| Total GF Request | 151.2 | 172.1 |

Key Programs and Projects

\$ in millions, excludes non-General Fund sources

| Project Name | Type | Prior Appropriation | | Requested | |
|---|-------------|---------------------|-------------|-------------|-------------|
| | | FY24 | FY25 | FY25 | FY26 |
| Street Resurfacing – General Fund Support | Streets | 32.8 | 17.0 | 36.8 | 38.6 |
| Curb Ramps Program | ADA | 2.0 | 1.0 | 11.9 | 12.6 |
| Street Tree Planting & Establishment | Enhancement | - | - | 7.6 | 8.0 |
| Hallidie Plaza Elevator | ADA | - | - | 4.8 | - |
| Sunset Blvd Recycled Water Irrigation | Enhancement | - | - | 2.9 | 1.0 |
| Operations Yard Improvements | Renewal | 0.3 | - | 1.5 | 0.8 |
| Community Renewal Projects | Renewal | - | - | 0.4 | 0.4 |

1 This is not a complete list of requests for this department. The complete list is available upon request.

CAPITAL BUDGET

GF Requests – Public Works (2/7)

Other Key Ongoing Renewal Programs

\$ in millions, excludes non-General Fund sources

| Project Name | Type | Prior Appropriation | | Requested | |
|--------------------------------------|-------------|---------------------|------|-----------|------|
| | | FY24 | FY25 | FY25 | FY26 |
| Pothole Repair | ROW Renewal | 1.5 | 1.5 | 3.2 | 3.3 |
| Street Structure Inspection Program | ROW Renewal | 0.5 | 0.5 | 2.5 | 2.6 |
| Bridge Inspection and Repair Program | ROW Renewal | - | - | 1.2 | 1.2 |
| Plaza Inspection and Repair Program | ROW Renewal | 0.1 | 0.2 | 0.6 | 0.6 |
| Median Maintenance | ROW Renewal | 0.1 | 0.1 | 0.3 | 0.3 |

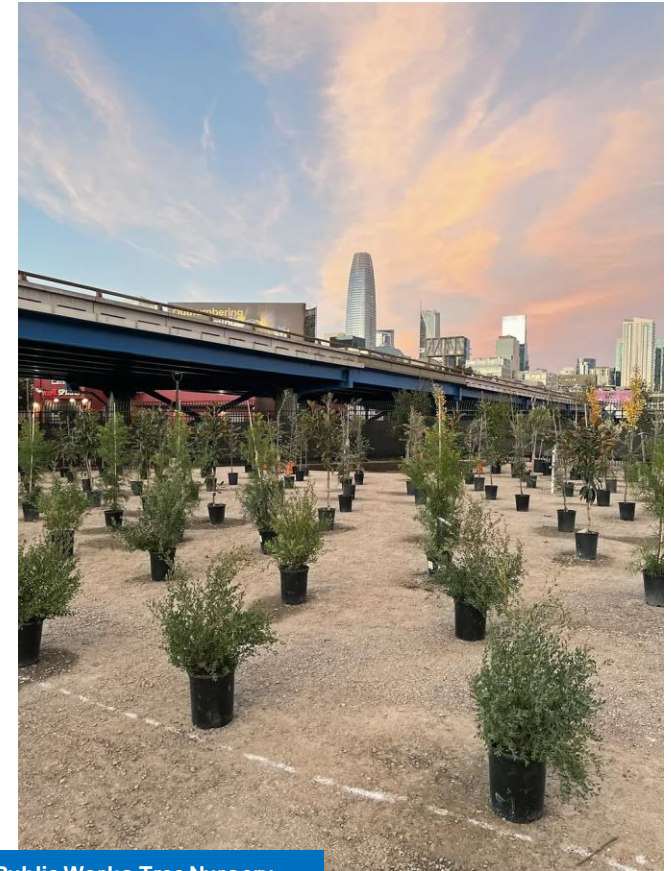
CAPITAL BUDGET

GF Requests – Public Works (3/7)

Street Tree Planting and Establishment

| Program | FY 25 | FY 26 |
|---|------------|------------|
| Street Tree Planting and Establishment | 7.6 | 8.0 |
| Street Tree Planting and Establishment in Equity Priority Neighborhoods | 0.6 | 0.6 |
| Total (in millions) | 8.2 | 8.6 |

- Street tree program would plant and establish 2,900 replacement trees
- Prioritize equity priority neighborhoods and areas with lower tree canopy coverage, in line with recent \$12M Inflation Reduction Act (IRA) Urban Forestry federal grant award.



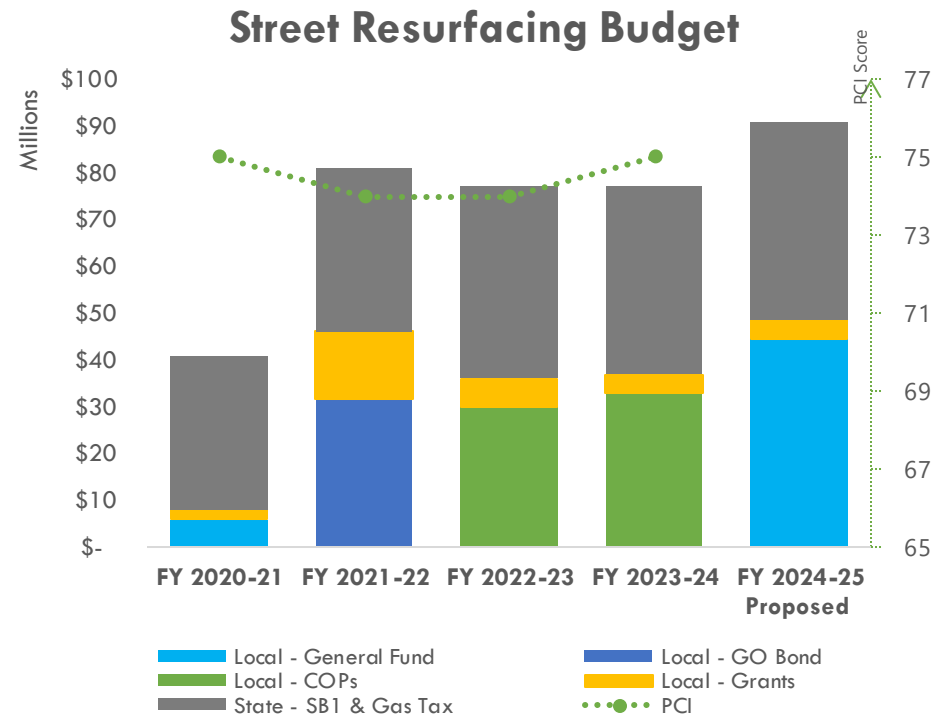
Public Works Tree Nursery

CAPITAL BUDGET

GF Requests – Public Works (4/7)

Street Resurfacing & Reconstruction

- Goal: Maintain Pavement Condition Index (PCI) of 75
- Resurface at least 500 blocks per year in FY25 and FY26
- Funded with \$31.5M from 2020 Health and Recovery GO Bond in FY22
- Funded with Certificates of Participation (COPs) in FY23 (\$30.0M) and FY24 (\$32.8M)
- The Street Resurfacing program prioritizes streets by PCI score, multi-modal routes, geographic equity, inquiries, coordination and project readiness



CAPITAL BUDGET

GF Requests – Public Works (5/7)

Curb Ramp Program and Street Structure Program

| Program | FY 25 | FY 26 |
|--|-------------|-------------|
| Curb Ramp Program | 11.9 | 12.6 |
| Street Structure Inspection & Repair Program | 2.5 | 2.6 |
| Plaza Inspection and Repair Program | 0.6 | 0.6 |
| Total (in millions) | 15.0 | 15.8 |

- ▣ If proposal is fully funded, Curb Ramp Program could design and build 240 curb ramps per year



CAPITAL BUDGET

GF Requests – Public Works (6/7)

Other Priority Projects

| Project | FY 25 | FY 26 |
|--|------------|------------|
| Public Works Operations Yard HVAC system upgrade | 3.5 | - |
| 4th Street Bridge Corrosion Repair | 2.5 | - |
| Innes Street Catchment Fence | 0.5 | - |
| Guerrero Plaza Ramps | - | 0.5 |
| Total (in millions) | 6.5 | 0.5 |

- Corrosion repairs and much-needed maintenance to 4th Street Bridge, to ensure a safe and functional structure and major corridor
- Critical health & safety building improvement to Public Works Operations Yard



Fourth Street Bridge

CAPITAL BUDGET

GF Requests – Public Works (7/7)

Reductions and Reallocations

| Project | FY 25 (in millions) |
|---|------------------------|
| Reductions | |
| Sidewalk Improvements and Repair (SIRP) | (1.0) |
| Accelerated Sidewalk Abatement Program (ASAP) | (0.3) |
| Reduction Total | (1.3) |
| Reallocations | |
| PW Operations Yard HVAC system upgrade | (1.8) |
| PW Perimeter Fencing upgrade project | 1.8 |
| Reallocation Total | - |

- Propose one-time reduction in FY25
- Reallocate general fund to other high priority capital programs and projects

Questions?



CAPITAL BUDGET

GF Requests – Recreation & Parks (1/9)

Capital Outlook: Continue to address renewal needs across the portfolio while advancing 2020 G.O. Bond projects

\$ in millions, excludes non-General Fund sources

| | FY25 | FY26 |
|------------------|------|------|
| Total GF Request | 122 | 15 |

Key Projects

\$ in millions, excludes non-General Fund sources

| Project Name | Type | Prior Appropriation | | Requested | |
|--|---------|---------------------|------|-----------|------|
| | | FY24 | FY25 | FY25 | FY26 |
| Playing Fields & Turf Replacement | Renewal | 3.2 | 3.2 | 3.2 | 3.1 |
| Playgrounds, Courts, Fields | Renewal | 2.0 | 2.0 | 2.2 | 2.2 |
| General Facilities Maintenance & Renewal | Renewal | 1.3 | 1.3 | 1.3 | 1.3 |
| Gateways, Borders, Bollards, Fencing | Renewal | 1.3 | 1.3 | 1.2 | 1.2 |
| Camp Mather Maintenance & Renewal | Renewal | 0.9 | 0.9 | 0.9 | 0.9 |
| ADA Compliance Budget | ADA | 0.8 | 0.8 | 0.8 | 0.8 |
| <i>Palace of Fine Arts Roof & Sewer*</i> | Renewal | - | - | 15 | - |
| Marina Seawall Work | Renewal | - | - | 92 | - |

1

- This is not a complete list of requests for this dept. Complete list is available upon request.
- * *Palace of Fine Arts FY24 Request was not approved as part of the budget.*

CAPITAL BUDGET

GF Requests – Recreation & Parks (2/9)

Playing Field & Turf Rehabilitations:

\$3.2M of FY25 General Fund



Pipeline:

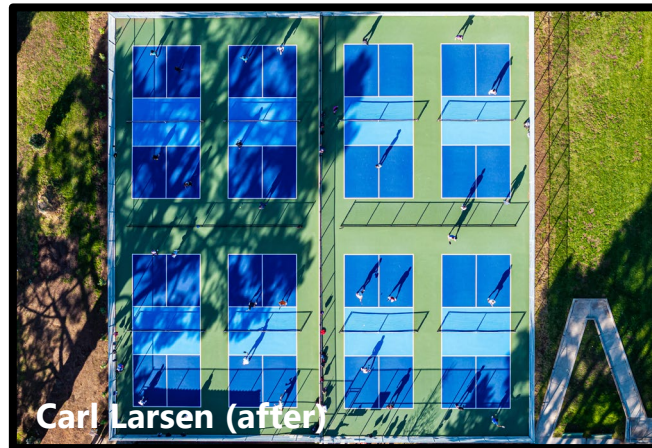
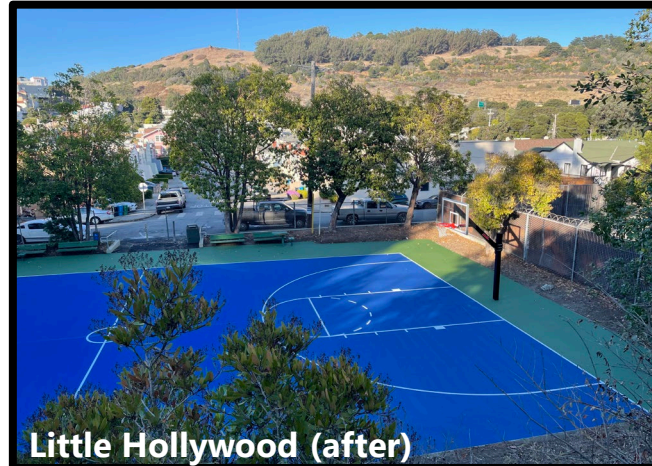
Kimbell PG, Minnie Lovie Ward, Beach Chalet

CAPITAL BUDGET

GF Requests – Recreation & Parks (3/9)

Court Resurfacing Project:

\$750K of FY25 General Fund



Court Resurfacing Pipeline:

Sunnyside, Rochambeau, Bernal Heights Rec, Douglass, Alta Plaza

CAPITAL BUDGET

GF Requests – Recreation & Parks (4/9)

Playground Maintenance Projects:

\$950K of FY25 General Fund



Playground Maintenance Pipeline:

Presidio Wall, Aptos, Brooks, Upper Noe, Tenderloin Rec, Adam Rogers

CAPITAL BUDGET

GF Requests – Recreation & Parks (5/9)

Irrigation Renewals:

\$500K of FY25 General Fund



Pipeline:

Stern Grove, Crocker Amazon, Lincoln Golf Course, Sites throughout GGP

CAPITAL BUDGET

GF Requests – Recreation & Parks (6/9)

ADA Barrier Removal Projects:

\$800K of FY25 General Fund



Pipeline:

Jefferson, Botanical Garden, Mather, Botanical Garden Restroom

CAPITAL BUDGET

GF Requests – Recreation & Parks (7/9)

Palace of Fine Arts Roof Repair and Sewer Project:
\$15M of FY25 General Fund



CAPITAL BUDGET

GF Requests – Recreation & Parks (8/9)

Palace of Fine Arts Roof Repair and Sewer Project:
\$15M of FY25 General Fund



CAPITAL BUDGET

GF Requests – Recreation & Parks (9/9)

Marina Seawall Work Project:
\$92M of FY25 General Fund



Questions?

