

10-Year Capital Plan

January 13, 2025

Capital Planning Committee



Inspire, Connect, Play!

RPD STRATEGIC PLAN *Links to 10-Year Capital Plan*



**Inspire
Place**



**Inspire
Play**



**Inspire
Investment**



**Inspire
Stewardship**



**Inspire Our
Team**



HIGHLIGHTS

Herz Playground



GGP Middle Lake Rehabilitation

Lake Merced Trails



India Basin Phase 1 & 2 - 900 Innes Ave

Crocker Amazon Field Replacement



UN Plaza Skate Park

IN CONSTRUCTION



Japantown Peace Plaza



Herz Recreation Center



Gene Friend Recreation Center



HIGHLIGHTS G.O. BOND ACCOMPLISHMENTS

2020 Health & Recovery Bond

- ✓ 5 Named Parks \$101M
 - *Five active projects*
- ✓ Citywide Parks & Programs \$138M
 - *Nine active projects*
- ✓ *74% of allocated funding in Environmental Justice Communities*



2012 Clean & Safe Neighborhood Parks Bond

- ✓ 15 Named Parks \$97M
- ✓ 6 Programs \$62M
- ✓ +80 projects complete
- Remaining Citywide Parks & Programs Projects in construction
 - *McLaren Trails*
 - *Let's Play SF! at Stern Grove & Buchanan St Mall*



ENHANCEMENTS 2020 BOND PROJECTS IN EJC's

Japantown Peace Plaza \$34m



- EJ Communities
- RPD Parks
- Neighborhoods
- Non-RPD Parks

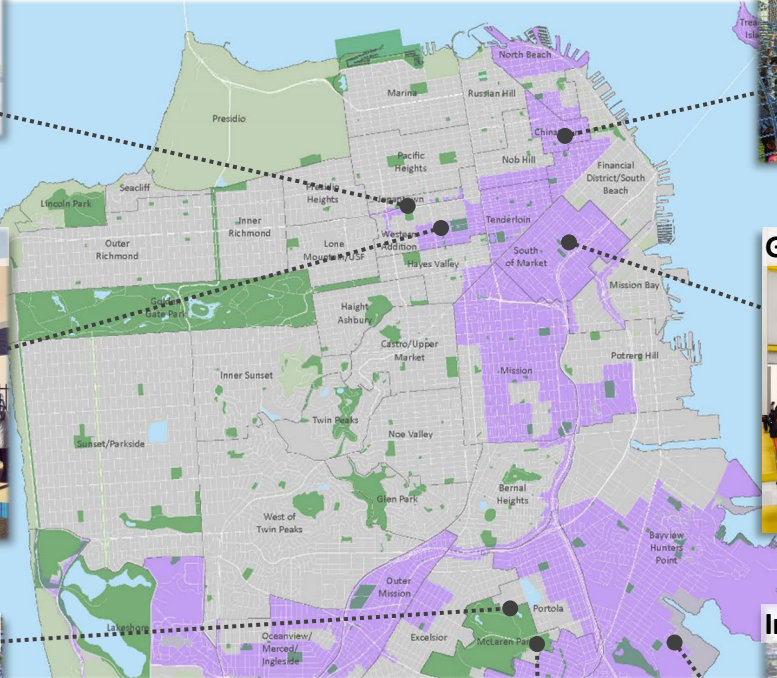
Portsmouth Square \$72m



Buchanan Street Mall \$34m



Gene Friend Rec Center \$59.3m



John McLaren Park \$6m



Herz Recreation Center \$26.1m



India Basin \$200m



HIGHLIGHTS INDIA BASIN PHASE 2 OPENING



HIGHLIGHTS INDIA BASIN PHASE 2 OPENING



HIGHLIGHTS INDIA BASIN PHASE 2 OPENING

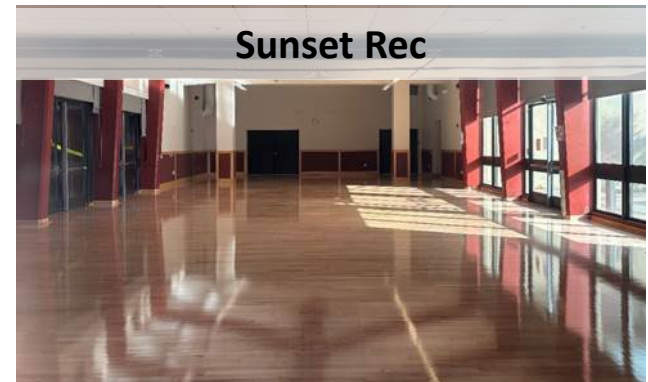


RENEWALS GENERAL FUND SET ASIDE

The Department also dedicates ~\$15m of General Fund dollars to deferred maintenance and improvements throughout the city.

Programmed Pipeline includes:

- **ADA Barrier Removal Projects** in GGP Botanical Garden, Bernal Heights and Tenderloin Recreation Centers
- **Resurface courts** at Victoria Manola Draves Park, Rochambeau, Eureka Valley, Crocker Amazon
- **Field rehabilitations** at Balboa Park, Rossi Playground
- **Resurface floors** bi-annually at Rec Centers and clubhouses throughout the system
- **Install water bottle fillers and trash cans** at various parks
- **Irrigation improvements** in Lincoln Park with added recycled water, GGP AIDS Grove
- **Retaining walls, erosion control, urban forestry management** at George Christopher, Lake Merced, Pine Lake



RENEWALS PLAYGROUNDS

Through Bonds, partnerships and General Fund, the Department has three major efforts to keep our playgrounds fresh.

Playground Capital Improvement Plan:

- **Playground Maintenance** at Upper Noe, Excelsior, Minnie & Lovie, Yik Oi Huang
- **Playground Renewals** developing program using cooperative purchasing agreements – first project at Bernal Heights Rec Center
- **Playground Renovations** through partnerships and Bond investments, programmed sites with Kaboom! partnership to address play space inequities Tenderloin Rec Center, Randolph/Bright, Silver Terrace & Crocker Amazon Purple Playground



ENHANCEMENTS *VARIOUS SOURCES*

Enhancements with Health & Recovery Bond, philanthropy, developer impact fees, general fund, grants and other sources:

- Kezar Pavilion Seismic Stability and Improvements
- SF Marina Improvement and Remediation
- Embarcadero Plaza Improvements
- Great Highway

Embarcadero Plaza Improvement
partner rendering

\$25m



Great Highway



SF Marina Improvement and Remediation

\$190m



Kezar Pavilion

\$140m



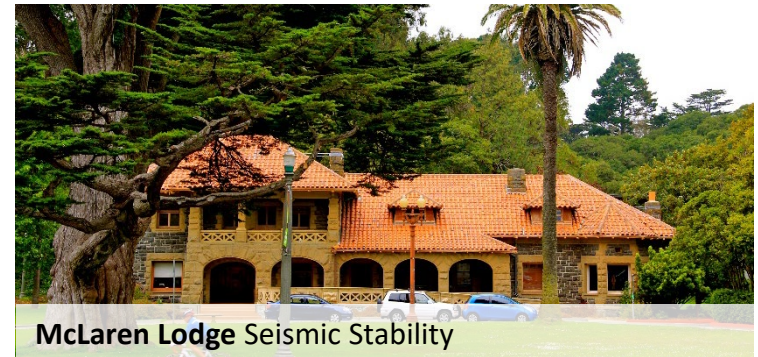
EMERGING & DEFERRED NEEDS

Many important projects have been deferred or are emerging, including:

- Park Roadways and Parking Lots
- Camp Mather Master Plan
- Golden Gate Park Senior Center
- McLaren Lodge Seismic Upgrades
- Mission Rec Center
- Sharp Park Habitat Restoration
- Marina Seawall
- Palace of Fine Arts Roof



Golden Gate Park Senior Center



McLaren Lodge Seismic Stability



Camp Mather



Mission Rec Center



Thank you

SAN FRANCISCO
RECREATION
& PARKS