

Waterfront Parks Bonds - South Beach Harbor Playground

Capital Planning Committee
April 20, 2026



2008 & 2012 Waterfront Parks Bonds

2008 Clean and Safe Neighborhood Parks General Obligation Bond - \$185M

Waterfront Parks and Open Spaces - \$33.5M

Projects Included:

- Pier 43 Bay Trail Link - **COMPLETE**
- Brannan Street Wharf - **COMPLETE**
- Blue Greenway Guidelines, Public Art, Signage and Site Furnishings - **COMPLETE**
- Bayfront Park - **COMPLETE**
- Heron's Head Park - **COMPLETE**
- Crane Cove Park - **COMPLETE**
- Bayview Gateway - **COMPLETE**

Previously Appropriated Interest (2015 & 2019): \$617,596

Interest Available for Appropriation: \$215,879



2012 Clean and Safe Neighborhood Parks General Obligation Bond - \$195M

Waterfront Parks and Open Spaces - \$34.5M

Projects Included:

- Public Plaza at Pier 27 Cruise Terminal - **COMPLETE**
- Agua Vista Park - **IN PROGRESS**
- Crane Cove Park - **COMPLETE**
- Islais Creek Shoreline Access Improvements - **COMPLETE**
- Heron's Head Park Improvements - **COMPLETE**
- Pier 27 Public Art - **COMPLETE**

Previously Appropriated Interest (2019): \$347,376

Interest Available for Appropriation: \$1,302,934



South Beach Harbor Playground: Existing Conditions

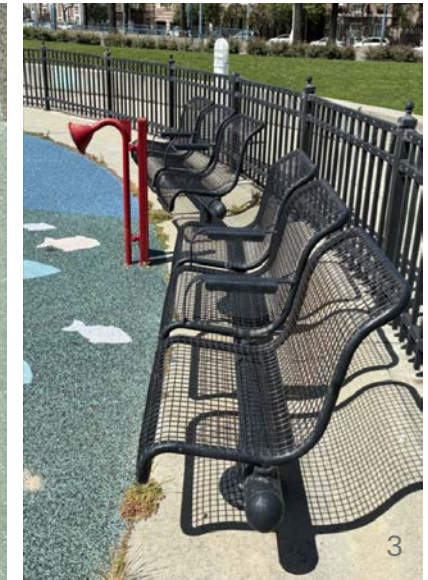
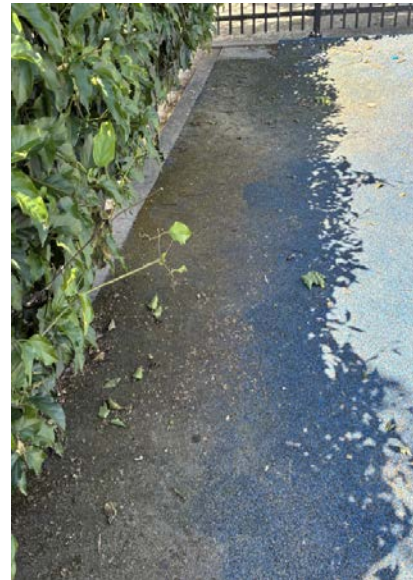
Playground Constructed: 1986

Existing Conditions:

- “Tot lot” intended for ages 0-2
- Safety surface unraveling
- Concrete walls spalling
- Equipment old and worn

Prioritization:

- **Capital Improvement Program:**
 - Identified as **high-priority**
- **Strategic Plan Alignment:**
 - Equity: serves growing neighborhood population that currently must travel outside the district for age-appropriate play, ADA-complaint and inclusive
 - Economic Vitality: enhancing family-friendly destinations supports the Port’s goal of boosting foot traffic and revenue for surrounding small businesses



South Beach Harbor Playground: Proposed Project

Objective: Transform the 40-year-old, 5,000 sqft. tot lot into a modern, 6,500 sqft inclusive playground

- Install multi-age play structures (ages 0-12), inclusive swings, and sensory play elements
- Safety upgrades including poured-in-place rubber surfacing
- Accessibility improvements (ADA ramps and pathways)
- Site amenities: new seating, lighting, and water-efficient landscaping

Bond Eligibility: Project directly aligns with the bonds' intent to provide safe, clean, and accessible neighborhood park facilities on Port-owned land



South Beach Harbor Playground: Budget & Timeline

Timeline

- Fall 2026 – Secure Design Team
- Winter 2027 – Community Design Review
- Spring/Summer 2027 – Finalize Bid Package
- Fall 2027 – Bid & Award
- Fall 2027 – Winter 2028 – Construction
- Spring 2028 – Completion

Budget

Planning, Permits & Contingency	\$150,000
Demolition & Site Prep	\$100,000
Surfacing & Safety	\$150,000
Playground Equipment	\$750,000
Site Amenities	\$160,000
Accessibility & Inclusion	\$100,000
Lighting & Safety	\$100,000
Total Budget	\$1,510,000



Requested Action

Request

- Approval to proceed with appropriation of \$1,510,000 in 2008 and 2012 Parks Bond interest earnings

Next Steps

- Confirm inclusion of funds in Mayor Lurie's proposed FY 2026-27 and 2027-2028 budget for the Port of San Francisco

